

Attachmate INFOConnect Airlines Gateway

Cost-Effective Communication Management Between Networked PCs and TPF/ALCS and Unisys Mainframes

INFOConnect Airlines Gateway is an efficient and economical solution to connect IBM-compatible PCs, a LAN, a WAN, or an intranet to one or more TPF/ALCS and Unisys mainframes—including Worldspan, Amadeus, Sabre, EDS Shares, and Apollo/Galileo. Designed for airline and travel industry customers, the Gateway improves access via a single connection using TCP/IP.

Attachmate® INFOConnect® Airlines Gateway manages communication for networked PCs running:

- Attachmate INFOConnect Enterprise Edition for Airlines
- Attachmate Reflection® for the Web 2008 Airlines Edition
- Attachmate Verastream® SDK for Unisys and Airlines

Migrate from expensive proprietary connections easily

Today, many travel industry vendors are discontinuing support for older protocol

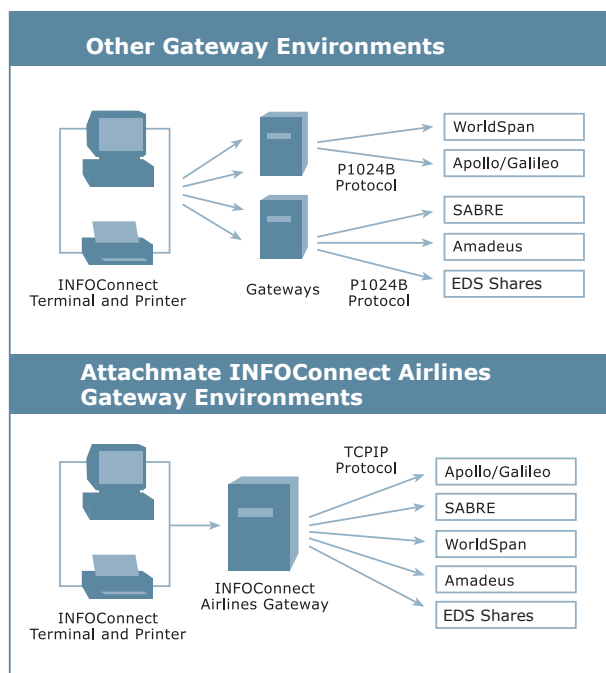
technology—and are requiring that users migrate to TCP/IP-based protocols. Since TCP/IP is quickly becoming the protocol of choice, INFOConnect Airlines Gateway is the best option when replacing the expensive proprietary connections. INFOConnect Airlines Gateway is a natural migration path, especially if you've been using gateways such as the Lantern gateway to connect to TPF/ALCS and Unisys hosts via proprietary connections.

Use just one gateway for multiple GDS connections

Typical gateway implementations supported connections to two GDSs over two separate proprietary connections, via an Attachmate card. With INFOConnect Airlines Gateway, you no longer have to rely on these costly proprietary connections to connect to your GDS systems. Now you can connect to multiple GDSs with just one gateway implementation.

KEY BENEFITS

- NEW** Compatible with Windows 7
 - Works with Windows Vista
- NEW** Supports IPv6
 - Cost-effective connectivity to GDS booking providers
 - Includes IP Concentration for the MATIP protocol to connect to hosts such as Amadeus and Worldspan
 - Terminal resource pooling
 - Supports up to 100 terminal addresses per host protocol
- NEW** Inactivity timeout for efficient resource management
 - Supports both ALC and UTS connections



Connect to multiple GDS systems with just one INFOConnect Airlines Gateway.

Simplify configuration with Terminal Address Pooling

Terminal Address pooling creates configuration data for multiple connections to a host. If you create pooled connections, you need to create only one for all the networked PCs that connect to INFOConnect Airlines Gateway. This simplifies configuration from the client side and enables Terminal Address sharing—which requires fewer resources from the hosting system.

Optimize network resources with connection concentration

Connection concentration is a built-in feature for connections over the MATIP Protocol. It enables you to take advantage of multiplexing or tunneling multiple client sessions over a single transport. Like connection pooling, connection concentration optimizes network resources and increases the number of client sessions that are possible across a fixed number of physical server ports. Unlike connection pooling, connection concentration maintains the transport connection.

Manage troubleshooting with Gateway Monitor

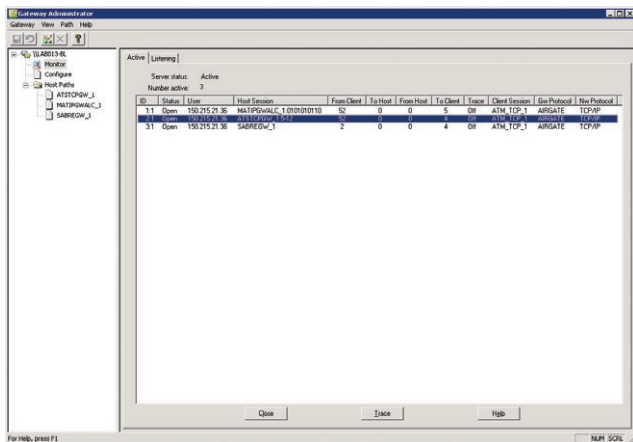
Gateway Monitor displays information about communication between the networked PCs, the INFOConnect Airlines Gateway, and the host. Using the Gateway Monitor, you can check to see which paths are active and which are not. Additionally, you can determine how many users are connected—and who the users are.

Using this utility, you can close connections between the networked PCs and the host. You can also trace communication between a networked PC, the gateway, and the host to determine whether communication problems are occurring at the gateway.

Attachmate has specialized in access and integration solutions for the airlines and travel industry for over two decades. With INFOConnect Airlines Gateway, you can migrate to newer, more efficient protocols easily and economically.

About Attachmate

Attachmate delivers advanced software for terminal emulation, legacy modernization, managed file transfer, and enterprise fraud management. With our technologies, more than 65,000 businesses worldwide are putting their IT assets to work in new and meaningful ways. www.attachmate.com



The Gateway Monitor in INFOConnect Airlines Gateway manages troubleshooting to keep your operations running smoothly.

TECHNICAL SPECIFICATIONS

Operating System Platform Support

- NEW** Windows 7
- Windows Vista
- Windows XP

Processor

- 500 MHz Intel Pentium-class

RAM

- 128MB

Disk Space

- 8 MB Free

Supported GDS Connections

- Worldspan
- Amadeus
- Sabre
- Apollo/Galileo
- EDS Shares

MATIP Concentration:

- Worldspan (WSE MATIP)
- Amadeus (MATIP)

Address Pooling:

- Worldspan
- Amadeus
- Sabre
- Apollo/Galileo
- EDS Shares



Corporate Headquarters
 1500 Dexter Avenue North
 Seattle, Washington 98109
 TEL 206 217 7500
 800 872 2829
 FAX 206 217 7515

EMEA Headquarters
 The Netherlands
 TEL +31 172 50 55 55
 FAX +31 172 50 55 51

Asia Pacific Headquarters
 Australia
 TEL +61 3 9825 2300
 FAX +61 3 9825 2399

Latin America Headquarters
 Mexico
 TEL +52 55 9178 4970
 FAX +52 55 5540 4886

WEB attachmate.com
 E-MAIL info@attachmate.com

For regional office information, visit www.attachmate.com.